

**SNCB / Beta-Synuclein Antibody (aa85-134)**  
**Rabbit Polyclonal Antibody**  
**Catalog # ALS15068****Specification**

---

**SNCB / Beta-Synuclein Antibody (aa85-134) - Product Information**

Application	WB, IHC-P, IF, E
Primary Accession	<a href="#">Q16143</a>
Reactivity	Human, Mouse, Rat
Host	Rabbit
Clonality	Polyclonal
Calculated MW	14kDa KDa
Dilution	WB~~1:1000 IHC-P~~N/A IF~~1:50~200 E~~N/A

**SNCB / Beta-Synuclein Antibody (aa85-134) - Additional Information****Gene ID** 6620**Other Names**

Beta-synuclein, SNCB

**Target/Specificity**

Synuclein beta Antibody detects endogenous levels of total Synuclein beta protein.

**Reconstitution & Storage**

Store at -20°C for up to one year.

**Precautions**

SNCB / Beta-Synuclein Antibody (aa85-134) is for research use only and not for use in diagnostic or therapeutic procedures.

**SNCB / Beta-Synuclein Antibody (aa85-134) - Protein Information****Name** SNCB**Function**

Non-amyloid component of senile plaques found in Alzheimer disease. Could act as a regulator of SNCA aggregation process. Protects neurons from staurosporine and 6-hydroxy dopamine (6OHDA)-stimulated caspase activation in a p53/TP53-dependent manner. Contributes to restore the SNCA anti-apoptotic function abolished by 6OHDA. Not found in the Lewy bodies associated with Parkinson disease.

**Cellular Location**

Cytoplasm.

**Tissue Location**

Expressed predominantly in brain; concentrated in presynaptic nerve terminals

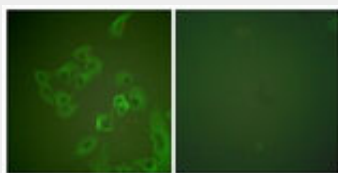
**Volume**

50 µl

**SNCB / Beta-Synuclein Antibody (aa85-134) - Protocols**

Provided below are standard protocols that you may find useful for product applications.

- [Western Blot](#)
- [Blocking Peptides](#)
- [Dot Blot](#)
- [Immunohistochemistry](#)
- [Immunofluorescence](#)
- [Immunoprecipitation](#)
- [Flow Cytometry](#)
- [Cell Culture](#)

**SNCB / Beta-Synuclein Antibody (aa85-134) - Images**

Immunofluorescence of A549 cells, using Synuclein beta Antibody.

**SNCB / Beta-Synuclein Antibody (aa85-134) - Background**

Non-amyloid component of senile plaques found in Alzheimer disease. Could act as a regulator of SNCA aggregation process. Protects neurons from staurosporine and 6-hydroxy dopamine (6OHDA)-stimulated caspase activation in a p53/TP53- dependent manner. Contributes to restore the SNCA anti-apoptotic function abolished by 6OHDA. Not found in the Lewy bodies associated with Parkinson disease.

**SNCB / Beta-Synuclein Antibody (aa85-134) - References**

Jakes R.,et al.FEBS Lett. 345:27-32(1994).  
Lavedan C.,et al.Genomics 54:173-175(1998).  
Kalnine N.,et al.Submitted (MAY-2003) to the EMBL/GenBank/DDBJ databases.  
Ebert L.,et al.Submitted (JUN-2004) to the EMBL/GenBank/DDBJ databases.  
Lubec G.,et al.Submitted (DEC-2008) to UniProtKB.